

## 6.2 OTHER POTENTIAL WORKS - EXISTING CAR-PARK UPGRADE

HDA has explored an option to expand the car park by 300m<sup>2</sup> to the south and implement a revised layout that could increase capacity from 33 to 48 spaces, including two accessible bays. To improve aesthetics and reduce maintenance of the current wooden fence, a new boundary hedge is proposed, which would visually soften the car park's presence from the recreation ground.

Upgrading the car park would enhance accessibility for users of both the recreation ground and Pangbourne Meadows, meeting Mend the Gap criteria by promoting sustainable access, recreation, and enjoyment for local communities and visitors.

Pros	Cons
Upgraded existing car-park provides extra vehicle space for recreational ground and meadows, benefiting many users	Planning permissions needed as in National Landscape
Meets mend the gap criteria - landscape access	Careful design needed in order to maintain pitch and recreation provision.
Takes pressure from on street parking on adjacent street	
Boundary hedge would screen car-park and create a softer edge to the recreation ground	
Upgraded access from car-park to meadow	



### 6.3 OTHER POTENTIAL WORKS - RECREATION GROUND LOOP

To improve accessibility and enhance user experience during wetter months, HDA has explored the options of a reinforced path around the perimeter of the recreation ground. This pathway would be designed with careful consideration for the existing tree root protection zones and the required run-off areas for the football pitches, ensuring that the improvements do not negatively impact these important features. Additionally, a hard landscaped meeting point / arrival space at the pavilion could improve the experience of the existing facilities.

#### Trail

Materials / products such as Golpla (Figure 2), Trailflex (Figure 3) or self-binding gravel (Figure 4) could be used to create an informal surfaced route that does not require digging. It is envisaged that it would be around 1.2m in width.

#### Tree survey

Careful consideration must be given when the proposed path crosses tree root protection areas, especially where no suitable alternative route is available. In such cases, a tree survey may be required to assess potential impacts on the trees. Appropriate path materials will be selected to minimize any disturbance and ensure the long-term health of the trees.

#### Alternate pitch locations

It may be beneficial to adjust the location of the football pitches (but not resize them) to provide sufficient space for the proposed path. Careful consideration should be given to both the path's alignment and the required run-off zones for the pitches to ensure that neither function is compromised.

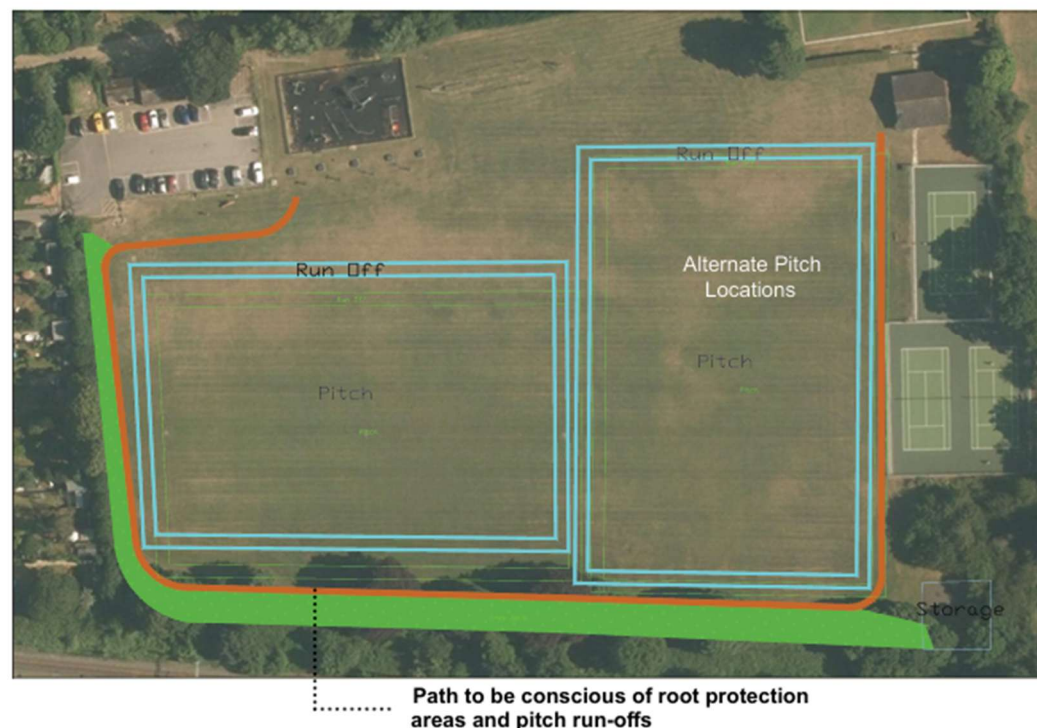


Figure 3 - Trailflex (Source - sudstech.co.uk)

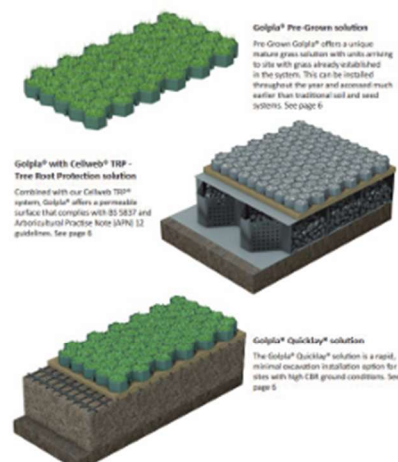


Figure 2 - Golpla Reinforced Grass products (Source - geosyn.co.uk)

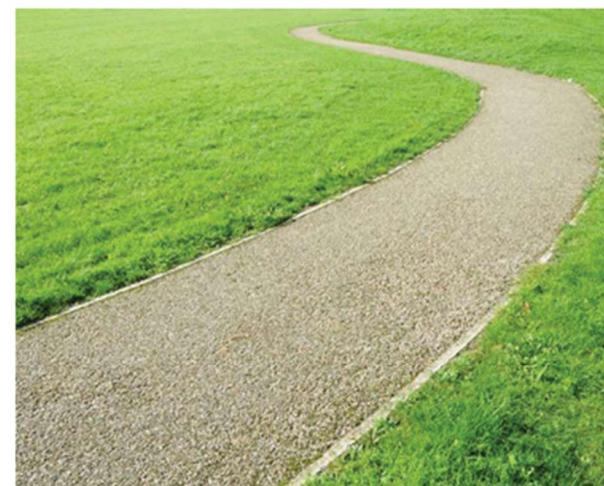


Figure 4 - Self Binding Path Gravel (Source - awbsltd.com/path-gravel)



#### 6.4 OTHER POTENTIAL WORKS - ADDITIONAL RECREATION GROUND FACILITIES

HDA has explored options for a parcel of the recreation ground, separated from the pitches and located next to the play area, that has potential for enhancement. However, since the site is prone to seasonal flooding, any proposed development in this area must carefully consider flood risk as a key factor in its design. Options include;

##### Older children / Teenager gathering spot

Pros	Cons
Create a gathering space with seating and good sight lines that deters antisocial behaviour and offers a green space for older children and teenagers to gather	Potential conflict between young adults gathering and bowls club
Expansion to current play facilities, expanding the age range for those catered too	Unusable when flooded

##### Basin and mound naturalistic play

Pros	Cons
Flood basins with mounds and timber play equipment offer flood proof expansion to play area	Environment agency would need to be consulted as to cut and fill requirements of creating new mounds

##### Sensory Flood Garden

Pros	Cons
Unique garden space that utilises flood water	Maintenance required
Sensory planting appeals to multitude of age ranges	
Improve aesthetics of recreation ground	

Options to be considered and costed when costs of primary aims are met.







## 7 RECOMMENDATIONS

After evaluating the available options and project HDA recommends taking the following initiatives forward for public consultation:

- 1 Ecology-Based Enhancements:** Once the ecology survey is complete, develop a design and supporting maintenance plan for the meadows to enhance the existing habitats. Where feasible, consider creating ponds and scrapes that could serve as focal points for future accessible footpaths. Additionally, improve the recreation ground's railway boundary with a graded ecotone that provides both ecological value and visual screening. Information boards should be installed to communicate these meadow improvements and explain the goals of the flood meadow restoration, as well as to highlight other biodiversity enhancement proposals in the region. These actions are expected to utilize the full Mend the Gap funding.
- 2 Pathway and Access Improvements:** Proceed with HDA's recommended route and pavilion arrivals area for the access path to the existing facilities.

**Looking forward** - Explore additional funding options to expand the car park and provide meadows board-walks, emphasizing that the upgrades will improve access for both the recreation ground and the meadows.

These recommendations are designed to balance enhanced access with ecological sensitivity, maximizing the impact of available funding while supporting community engagement with the project.